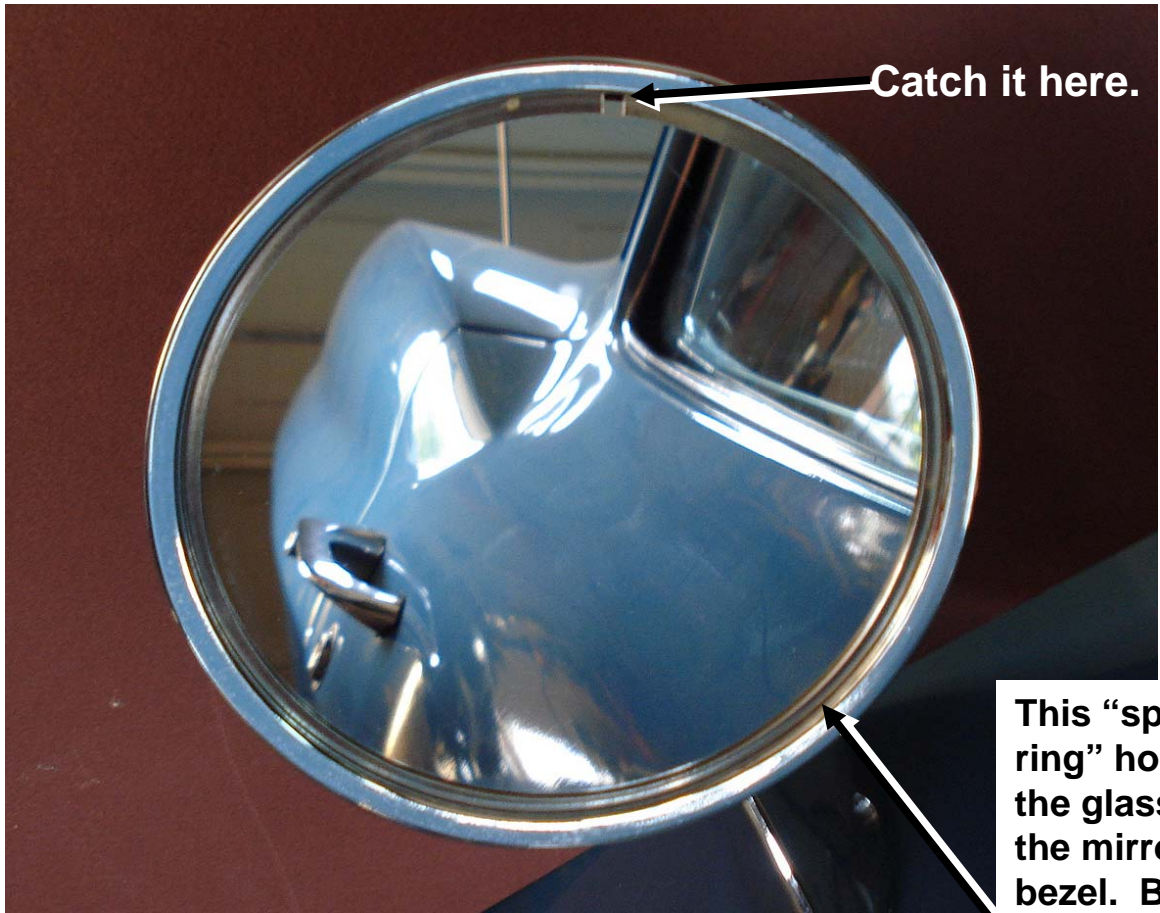


# Tightening a loose exterior rear-view mirror



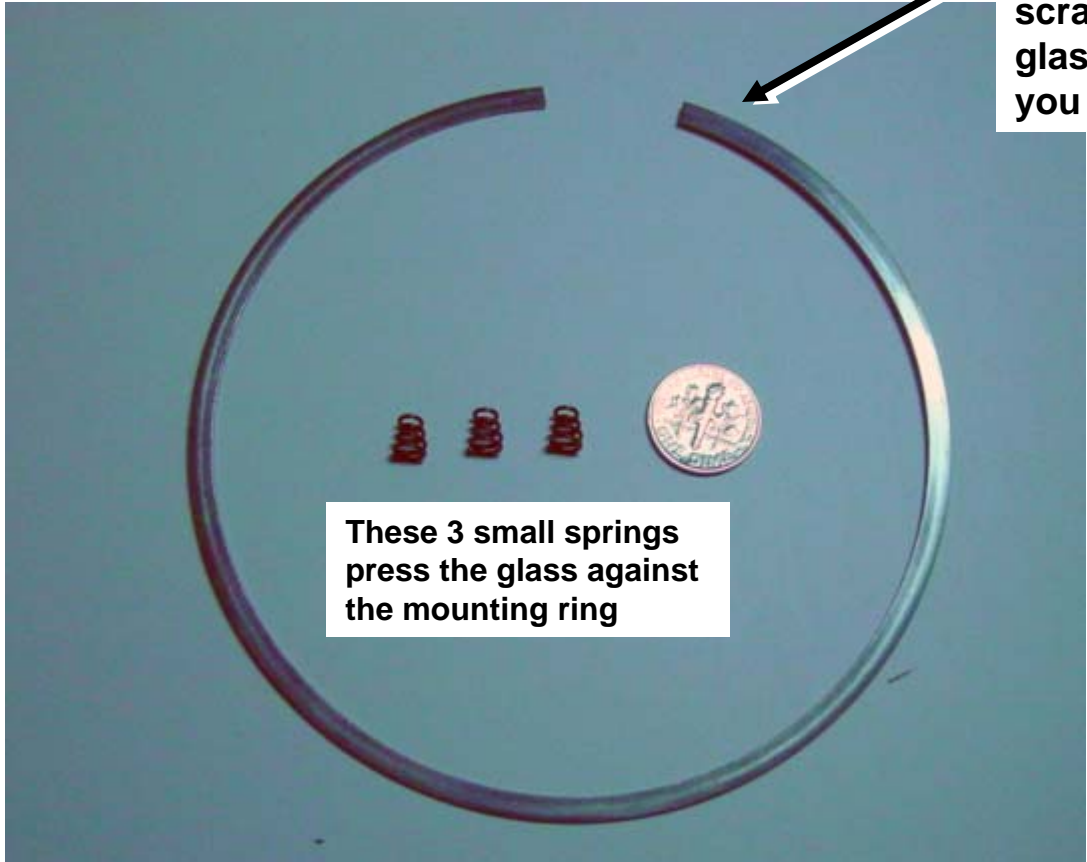
**The repro mirror on my 65 did not hold up very long before it started to wobble and wouldn't hold a fixed position. Here's how fixed the problem.**

**Dave Zuberer**

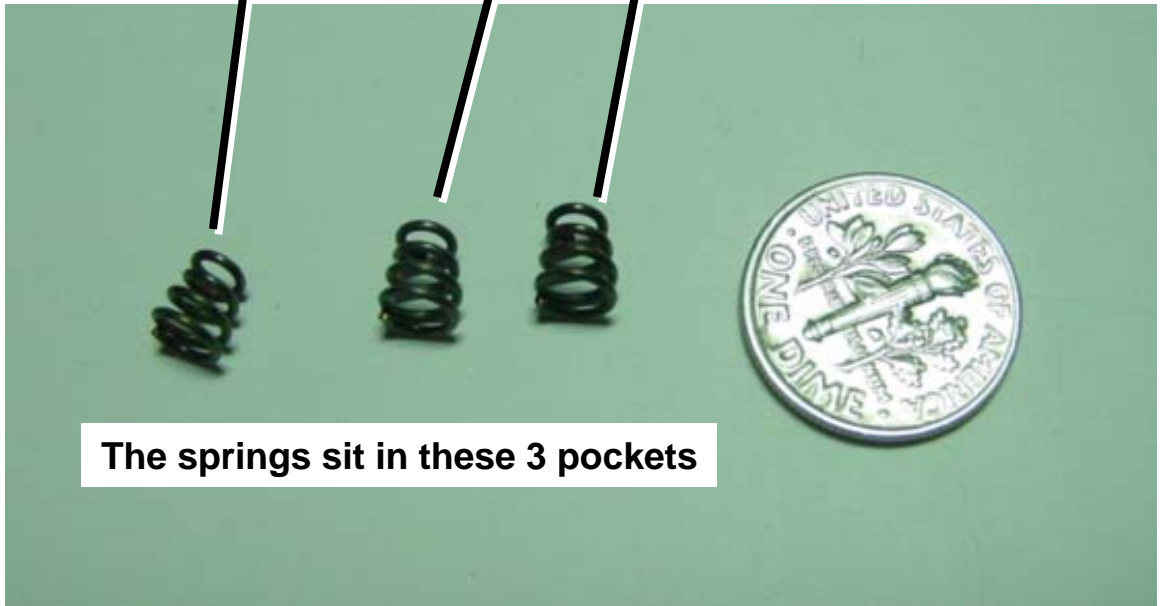
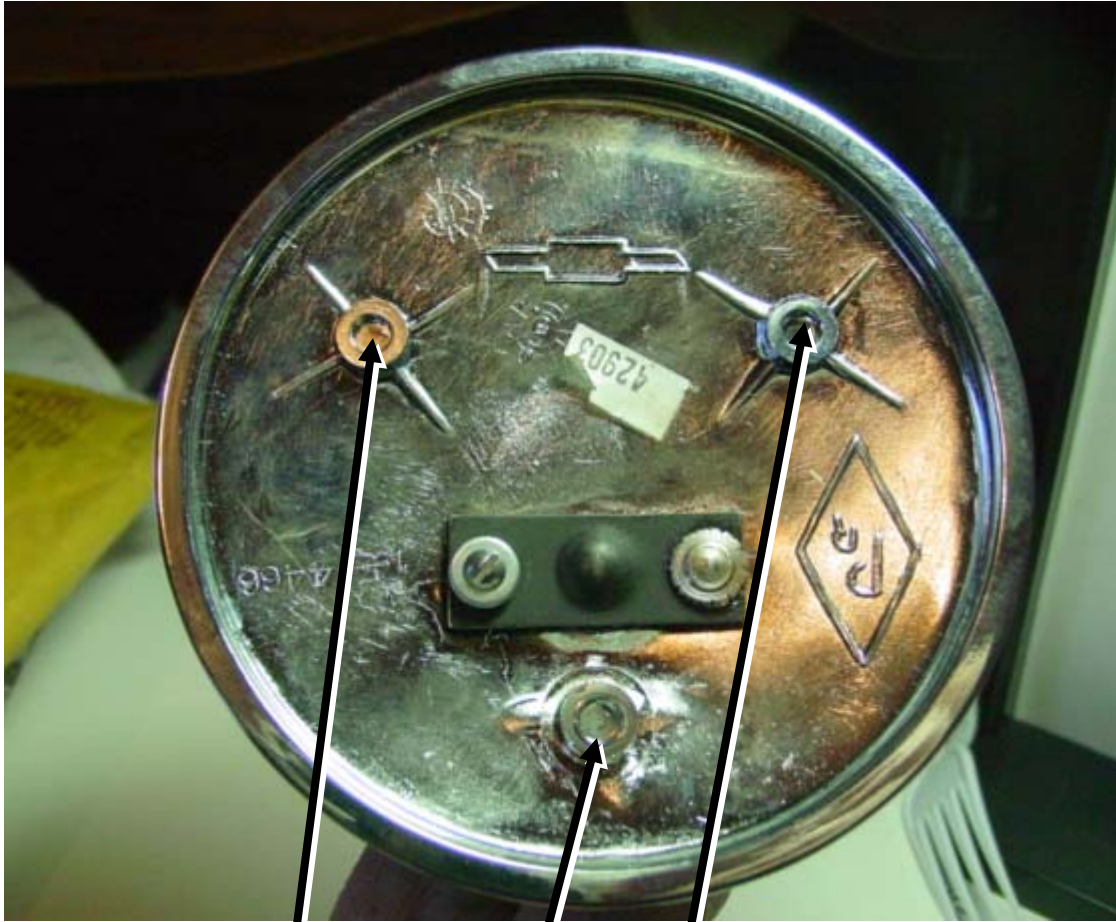


Catch it here.

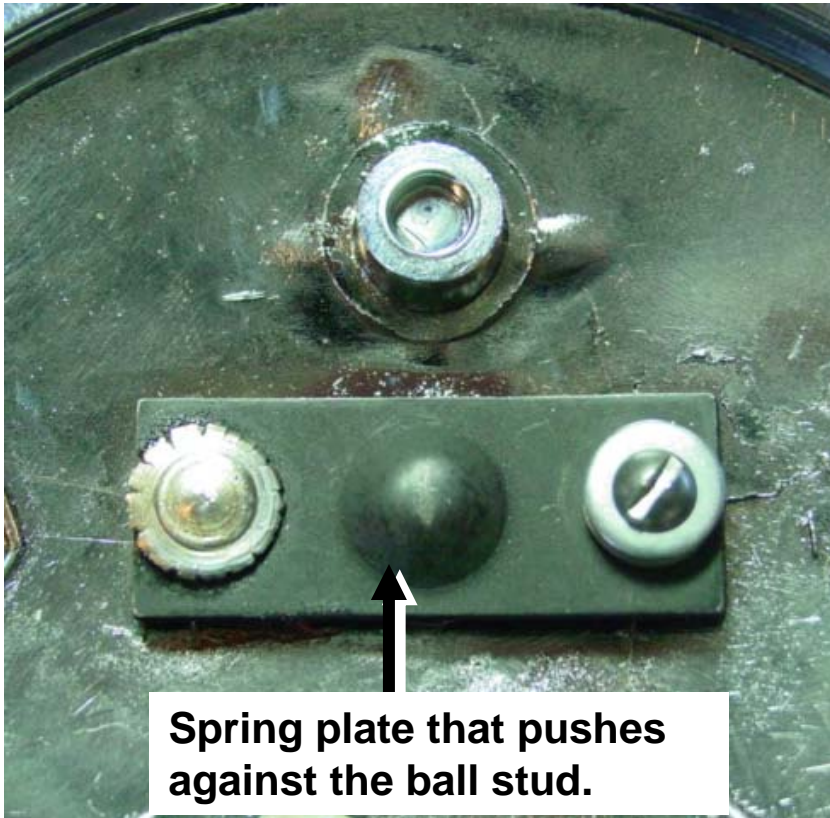
This "spring ring" holds the glass in the mirror bezel. Be careful not to scratch the glass when you pry it out.



These 3 small springs press the glass against the mounting ring



The springs sit in these 3 pockets



**Spring plate that pushes against the ball stud.**

**This spring plate presses against the pivot ball in the back of the housing. Mine was loose because the peening on the rivet had let loose.**

**I ground off the peened rivet flush with the plate and drilled and tapped the stud to accept a small screw. I had to file the screw head down (not shown here) to keep it from interfering with the mirror glass.**



**The mirror has been good and tight since the repair.**